

## Anschlussflansch (one-sided set)

### Product description

This set consists of 16 pieces Anschlussflansch and one cartridge Flanschdicht for bonding the Anschlussflansch to the frame and base.

**INSEBO Anschlussflansch** consists of a self-adhesive bitumen sealing tape and a screwable plastic strip with a groove. Size 200x300mm.

**INSEBO Flanschdicht** is a one-component adhesive based on modified polyurethane. It vulcanizes under the influence of moisture to form a permanently elastic adhesive.

### Produkteigenschaften

- fulfils the requirements of ÖNORM B 3691/3692 and DIN 18533
- excellent adhesion to all standard surfaces and bitumen
- very good coating compatibility according to DIN 52452
- can be used indoors and outdoors
- can be easily plastered over after curing
- waterproof, airtight, lightweight after curing permanently sticky
- weatherproof
- non-corrosive
- free of solvents, isocyanates and silicone
- Flanschdicht has excellent adhesion on commercially available construction foils also PE, bitumen and substrates such as Purenit and PET



### Areas of application

Both products are used to create a backwater-tight connection with floor-length elements. Anschlussflansch connects the external sealing according to ÖNORM B 5320 and the waterproofing of buildings according to ÖNORM B 3691/3692.

## Form of delivery

---

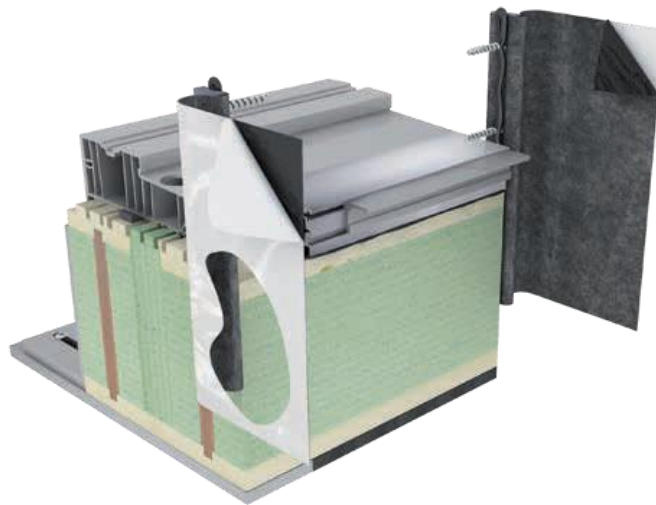
Packaging type: 16 pieces Anschlussflansch, 1 cartridge 290 ml Flanschdicht, 16 screw units consisting of 4 wood screws and 4 screws with drill bit, 16 pieces of plaster fleece and 1 assembly instruction

Packaging unit: cardboard box

## Processing instructions

---

The **INSEBO Anschlussflansch einteilig** is suitable for lateral mounting for floor-to-ceiling window and door elements to create a backwater-tight connection. (Please note that a solid material is required as a ground recess profile!)



The flange is mounted with at least 4 screws and a glue bead of **INSEBO Flanschdicht** (in the groove of the plastic strip) in the lower area outside laterally (see illustration).

Screw the Anschlussflansch to the side of the floor-to-ceiling elements. Mount upwards at least 150 mm above floor level (or according to the planner's specifications). The Anschlussflansch should always be mounted flush with the outside of the floor recess profile, so that the liquid waterproofing can be applied without tension.

Roll the Anschlussflansch onto the building structure without any creases or tension. The sealing (Anschlussflansch) must always be applied on the carrying building structure (masonry, concrete, or similar), not on the insulation. The Anschlussflansch should be glued immediately after assembly, otherwise the adhesive strength may decrease. If necessary, additionally glue the abutting edges with INSEBO Flanschdicht.

Warm up the surfaces in the cold season. If necessary, prime the area that can be plastered over and stick on the enclosed, white plaster fleece as a plaster base.

In the next step, the lower connection can be completed by making it backwater tight with liquid seals or bitumen sheeting (cold or flamed). A list of suitable liquid seals can be found in the assembly instructions included with each pack.

The adhesive surfaces must be stable, clean and free of dust and grease. If necessary roughen with abrasive fleece. Before each bonding of unusual substrates, a sample bonding should be made.

The manufacturer's processing instructions, the standards ÖNORM B 5320 / B 3691 / B 3692, DIN 18533 and the technical guidelines for building waterproofing - connection to floor-to-ceiling windows and doors part 1 and part 2 must be observed.

## Service

---

If you do need help, our trained sales staff are available to you at any time on request.

## Additional information

---

This technical data sheet provides non-binding advice without the assumption of a guarantee. The processing instructions given must be adapted to the respective circumstances. The processor is obliged to check the suitability and possible applications by carrying out individual tests in order to avoid failures.

All available descriptions, data, ratios, weights, etc. can change without prior notice and do not constitute the contractually agreed quality of the product. Existing laws and regulations are to be complied with by the recipient of our products on his own responsibility.

A guarantee of certain properties or suitability for a specific purpose cannot be given due to the large number of possible influences during processing and application. Own experiments and tests are necessary.

Technical changes reserved.

## Technical specifications

Properties	Standard	Value
<b>Anschlussflansch</b>		
Material base		self-adhesive bitumen mixture
Plastic rod		glass fiber reinforced plastic with groove
Thickness		about 1.5mm
Specific weight		approx. 1.5 kg/m <sup>2</sup>
s <sub>d</sub> -Value		ca. 200 m
Color		gray/black
Processing temperature (ideal)		+15°C up to +25°C, on a dry substrate
Temperature resistance	DIN 52455-4	-40 °C up to +100 °C
Shelf life		practically unlimited at approx. 20 °C. Store dust-proof and at a dry place. Protect from direct sunlight and always keep the outer box closed.

## Flanschdicht

Material base		modified polyurethane
Consistency		stable paste / permanently sticky / elastic
Skin-formation time (normal climate 23/50)		approx. 10 minutes
Density	DIN 53479	1,2 up to 1,3 g/ml
Temperature resistance		-40 °C up to +90 °C
Max. permissible total deformation	DIN EN ISO 11600	25 %
Building material class	DIN 4102 part 4	B 2
Shelf life (dry, at +5 up to +25 °C)		18 months